

INFORMATION ONLY – DOES NOT COMMUNICATE  
A MODIFICATION OR SAFETY CONDITION

# E5071B-10B

## S E R V I C E N O T E

Supersedes:  
E5071B-10A

### E5071B ENA Series Network Analyzer, 300 kHz to 8.5 GHz

Serial Numbers: [0000A00000 / 9999Z99999]

#### Update procedure of disk image(operating system) for E5071B

**Parts Required:** see solution

The change from E5071B-10A to E5071B-10B is as follows.  
- to change the CONFIG.SYS and to add PANEL.EXE file on the first boot disk in order to support no A26 LCD Interface/Video Card type E5071B. (S/N MY4242455 and above)

E5071B Serial-Number	MY4242454 and below	MY4242455 and above
A26 LCD Interface Card/Video Card	54810-66525	N/A
A22 Front Panel Keyboard	E5070-66522	E5070-66529

### ADMINISTRATIVE INFORMATION

SERVICE NOTE CLASSIFICATION:

## INFORMATION ONLY

AUTHOR: jm PRODUCT LINE: WN

ADDITIONAL INFORMATION:

This procedure must be performed by Agilent Technologies service offices

© AGILENT TECHNOLOGIES, INC. 2006  
PRINTED IN U.S.A.



February 15, 2006

**Situation:**

When using the A1 source board (E5071-66571/69571) in repairs, Rev A.05.00 or later firmware is required. If customer unit's firmware version is less than Rev.A.05.00, it should be updated by changing the operating system. With Rev A.03.60 or below version firmware, an error message "Power on test failed (A1 not found)" is shown at lower left part on a display at power on. With Rev A.03.62 or A.04.00 version firmware, any of messages "Power on test failed (A1 DC-bus, 0x00000010)", "Power on test failed (A1 DC-bus, 0x00000020)", or "Power on test failed (A1 DC-bus, 0x00000030)" is shown at power on.

To avoid troubling on customers, especially after a system recovery timing, it's necessary to update the E5071B operating system if customer unit's firmware is Rev.A.4.00 or below.

**Solution/Action:**

The installation procedure for the E5071B operating system is as follows.

**Required Equipment**

OS Image: DVD disk (Operating system for E5070B/71B, F/w rev.5.00, Agilent service office use only )

Software : Symantec Ghost™ 8.0 and later (English version, Enterprise product)

System(PC) : Windows 2000 Professional (or Windows XP Professional) with DVD drive  
(or available to support external DVD drives)

LAN Cable: Cross (It enables the peer-to-peer communication between the E5071B and the PC.)  
(or 2 straight cables and a hub.)

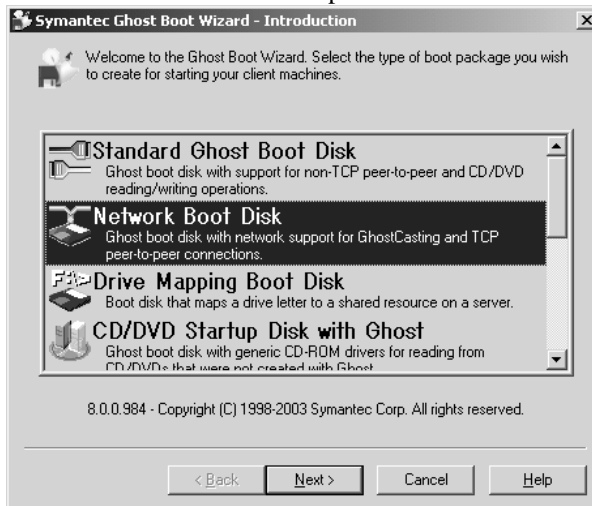
PC installed E5070/71B adjustment program(VEE, Agilent service office use only) and a GPIB cable

**Outline of the procedure**

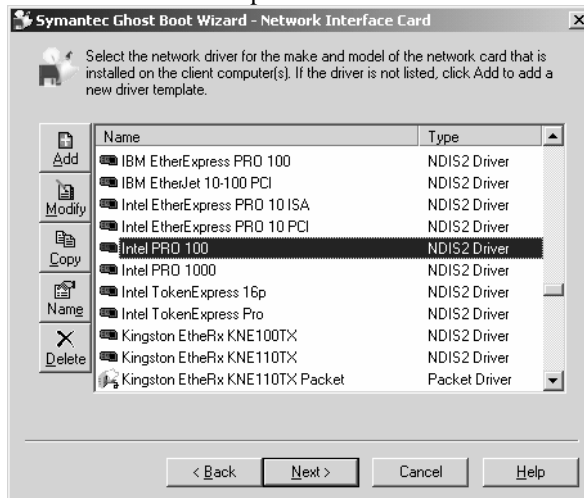
1. **Make Boot disks using Symantec Ghost (only needs to be done one time) (5 min.)**
2. **Connect the E5071B to your PC installed Symantec Ghost directly**
3. **Set up IP address and subnet mask of your PC (5 min.)**
4. **Set up GhostCast server (20 min.)**
5. **Copy the image file onto the E5071B's HDD (30 min.)**
6. **Perform initial setting for the E5071B (20 min.)**

## 1. Make Boot disks using Symantec Ghost (Required for the first time)

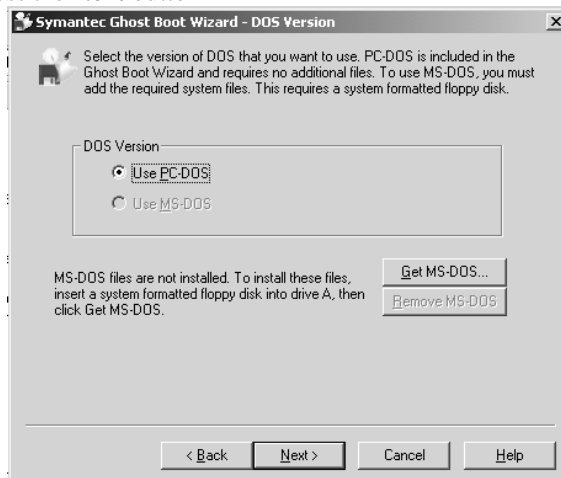
- 1) Click **Start – Programs – Symantec Ghost – Ghost Boot Wizard**.
- 2) Select **Network Boot Disk** and press the **Next** button.



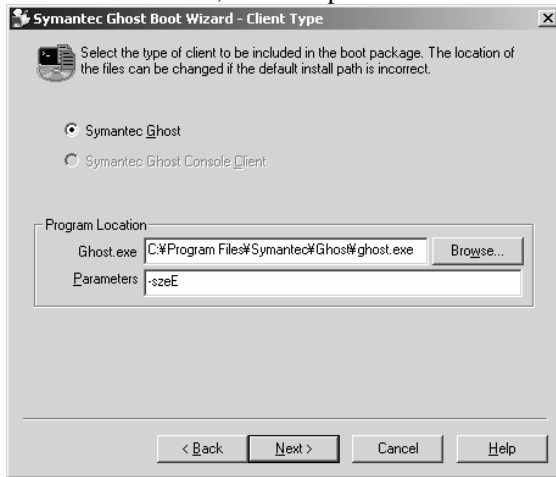
- 3) Select **Intel PRO100** and press the **Next** button.



- 4) Press the **Next** button



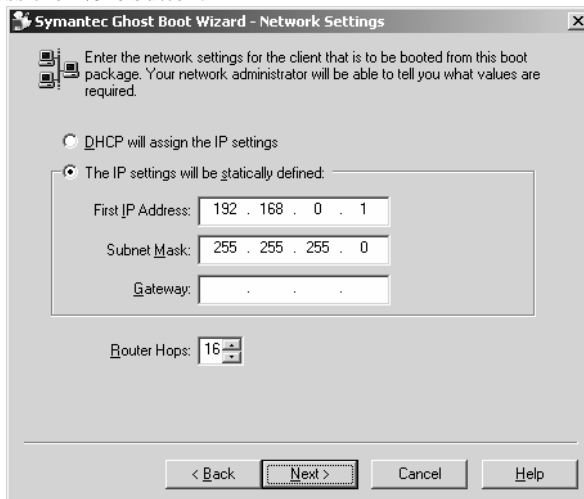
5) Enter Parameters **-szeE**, and then press the **Next** button.



6) Press the **Next** button.



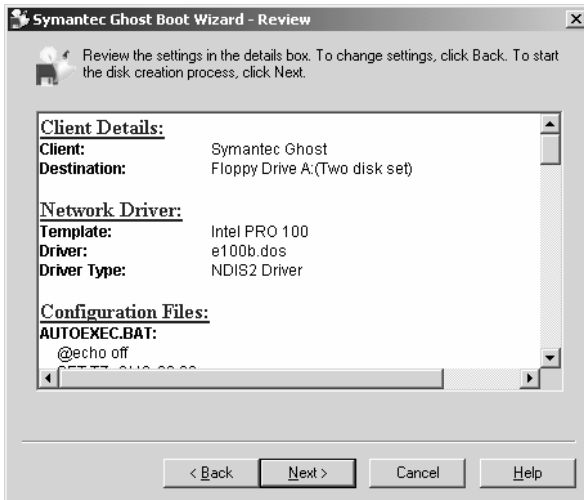
7) Select The IP setting ....., and enter IP address 192.168.0.1 and subnet mask 255.255.255.0. Press the **Next** button.



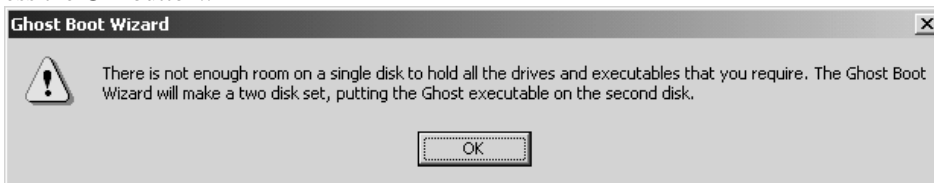
8) Insert a floppy disk into your PC's FDD, and the **Next** button.



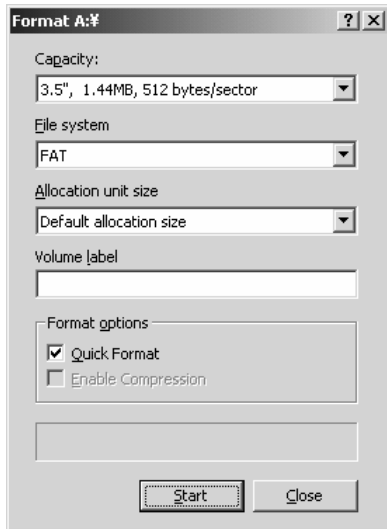
9) Press the **Next** button.



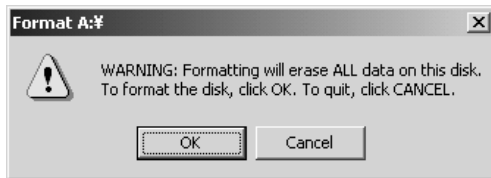
10) Press the **OK** button..



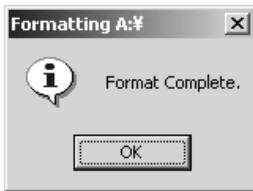
11) Press the **Start** button.



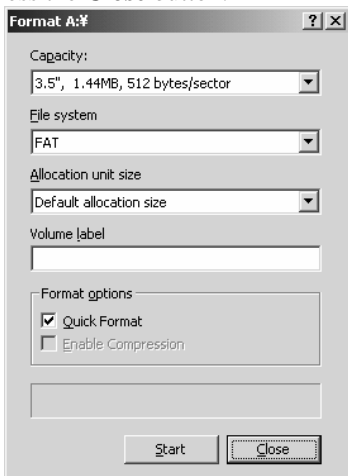
12) Press the **OK** button.



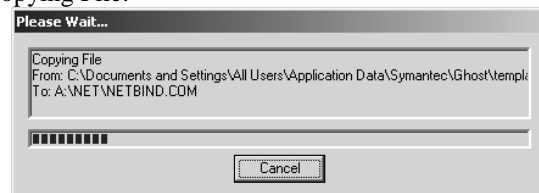
13) Press the **OK** button.



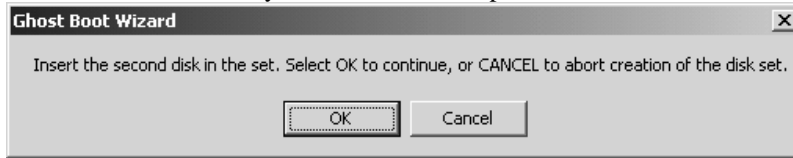
14) Press the **Close** button.



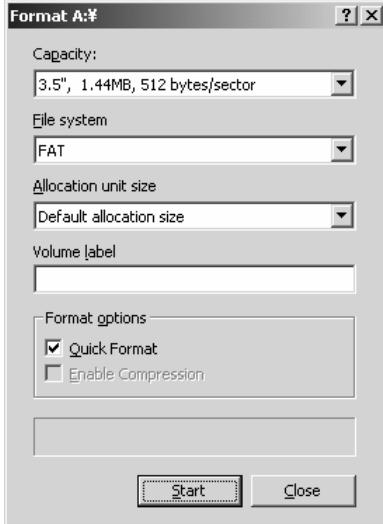
15) Copying File.



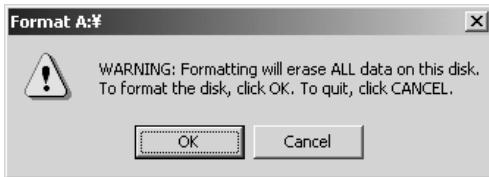
16) Insert the second disk into your PC's FDD, and press **OK** button..



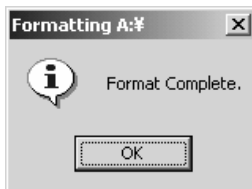
17) Press the **Start** button.



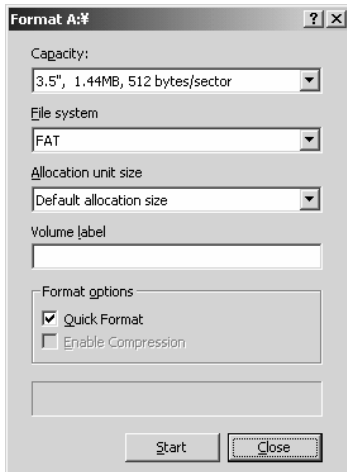
18) Press the **OK** button.



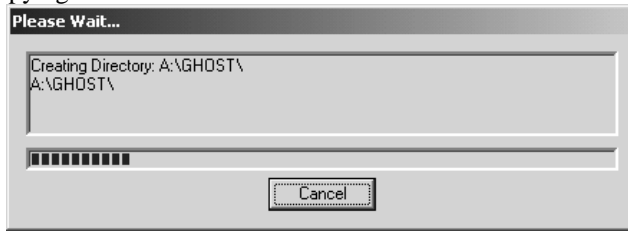
19) Press the **OK** button.



20) Press the **Close** button.



## 21) Copying File.

22) Press the **Finish** button.

===== For E5071B S/N MY4242455 and above, follow the next three steps. 23), 24), 25) and 26). =====

23) Insert the first disk into your PC's FDD, and open CONFIG.SYS with Notepad.

24) In the CONFIG.SYS, insert "DEVICE=A:\PANEL.EXE" as follows.

```
DEVICE=A:\PANEL.EXE
```

```
[menu]
```

```
menuitem=FROMFLPY, This computer was started from a Ghost boot disk
```

```
menuitem=FROMCD, This computer was started from a Ghost bootable CD
```

```
[FROMFLPY]
```

```
[FROMCD]
```

```
[COMMON]
```

```
DEVICE=\net\protman.dos /I:\net
```

```
DEVICE=\net\dis_pkt.dos
```

```
DEVICE=\net\e100b.dos
```

```
LASTDRIVE = Z
```

25) Download "PANEL.EXE" file from System Update using Symantec Ghost section on the CTD-Kobe web.

[http://kobemktg.jp/agilent.com/field\\_eng/service/service\\_programs/svcprog\\_e507071b.htm](http://kobemktg.jp/agilent.com/field_eng/service/service_programs/svcprog_e507071b.htm)

26) Then the PANEL.EXE file onto the first disk.

---

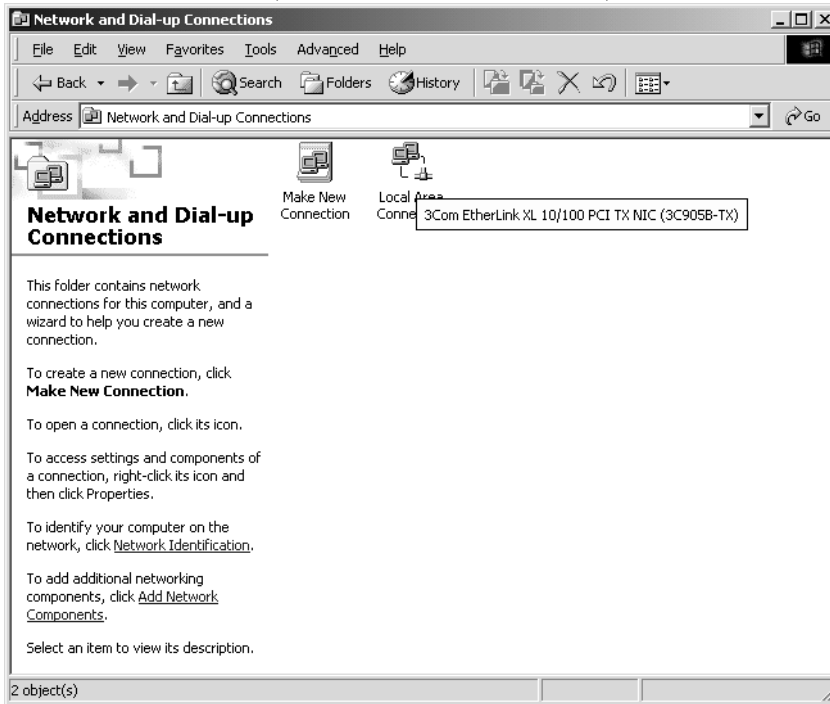
## 2. Connect the E5071B to your PC installed Symantec Ghost directly

1) Connect the E5071B to your PC installed Symantec Ghost directly using a crossed LAN cable (or two straight LAN cables and a Hub for LAN).

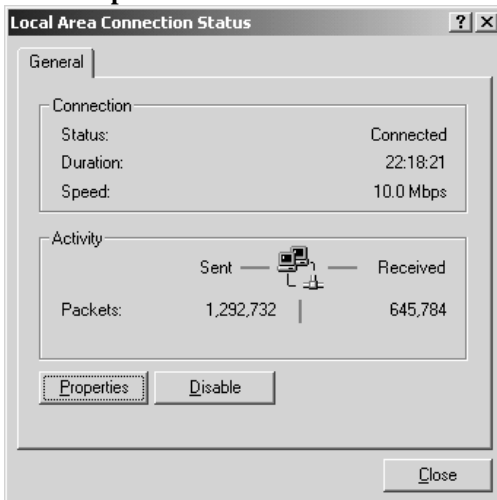


### 3. Set up your PC's IP address and subnet mask

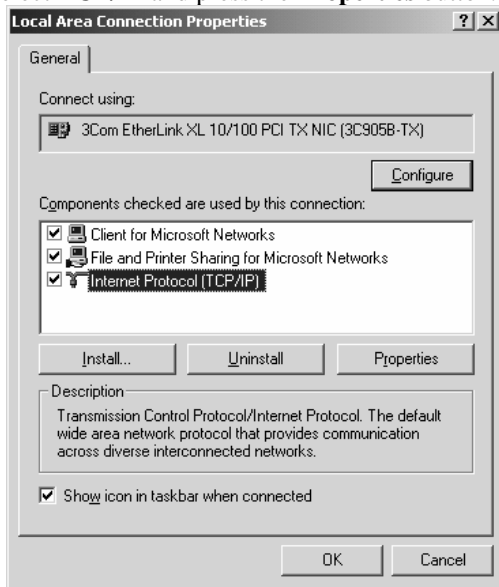
- 1) Double-click "My Computer" icon on Windows desktop of your PC. And double-click Control Panel. The Control Panel window will appear.
- 2) In the Control Panel window, double-click **Network and...**, and click **Local Area Connection**.



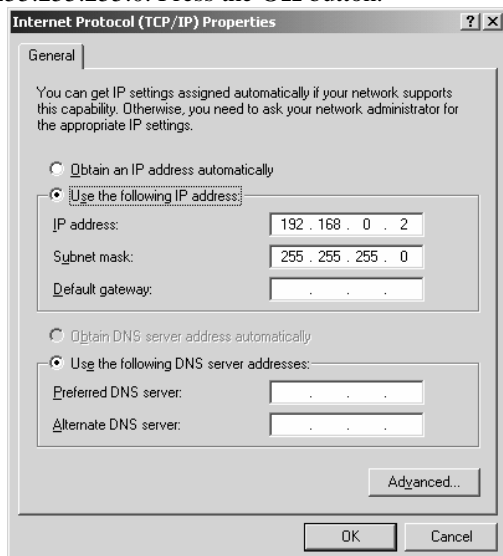
- 3) Press the **Properties** button.



- 4) Select **TCP/IP** and press the **Properties** button.



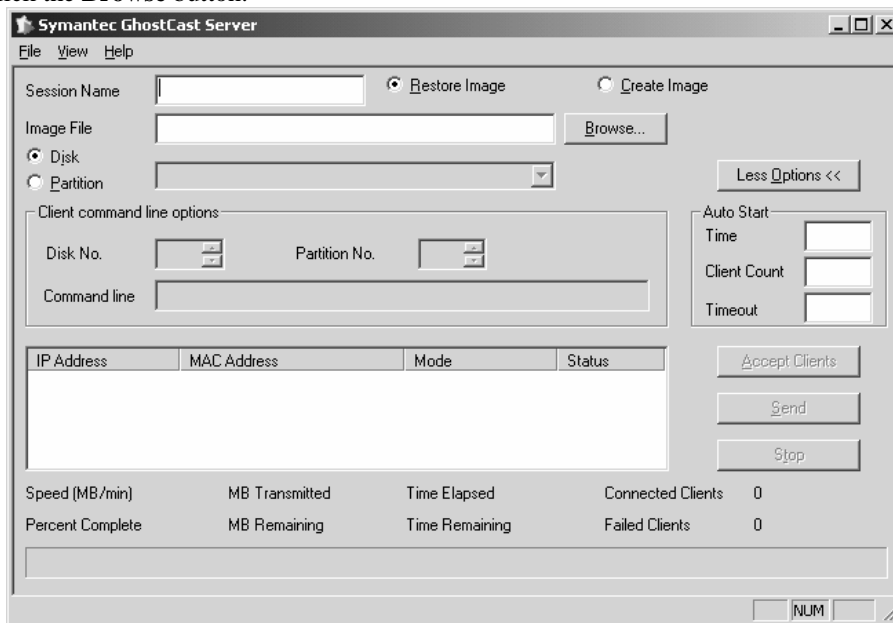
- 5) Select **Use the following IP address**, and then enter the IP address 192.168.0.2 and subnet mask 255.255.255.0. Press the **OK** button.



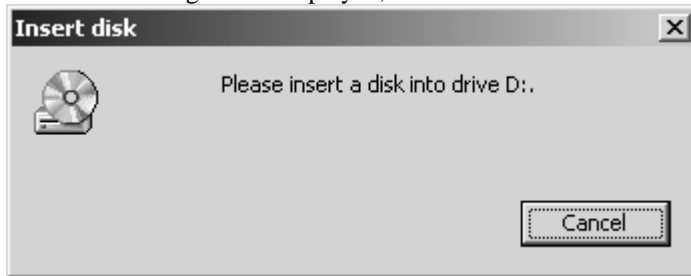
- 6) Restart your PC.

#### 4. Set up GhostCastServer

- 1) Insert the DVD disk (Operating System for E5070B/71B) into your PC's DVD drive (or an external DVD drive). Then copy the image file of the DVD disk onto your PC's HDD (C drive) as a temporary image file.
- 2) Click **Start** – **Programs** – **Symantec Ghost** – **GhostCastServer**.
- 3) Click the **Browse** button.



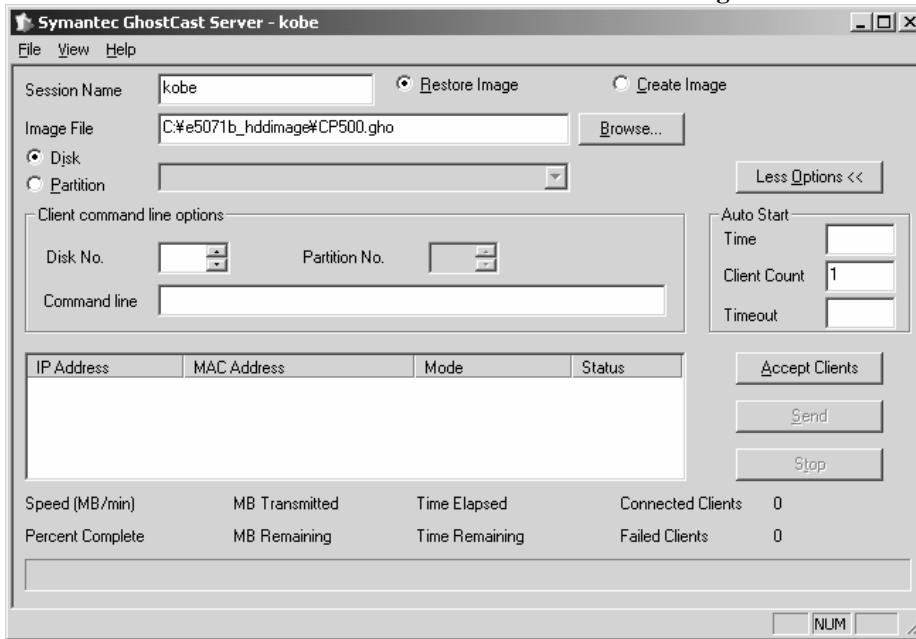
- 4) If Insert disk dialog box is displayed, click the **Cancel** button.



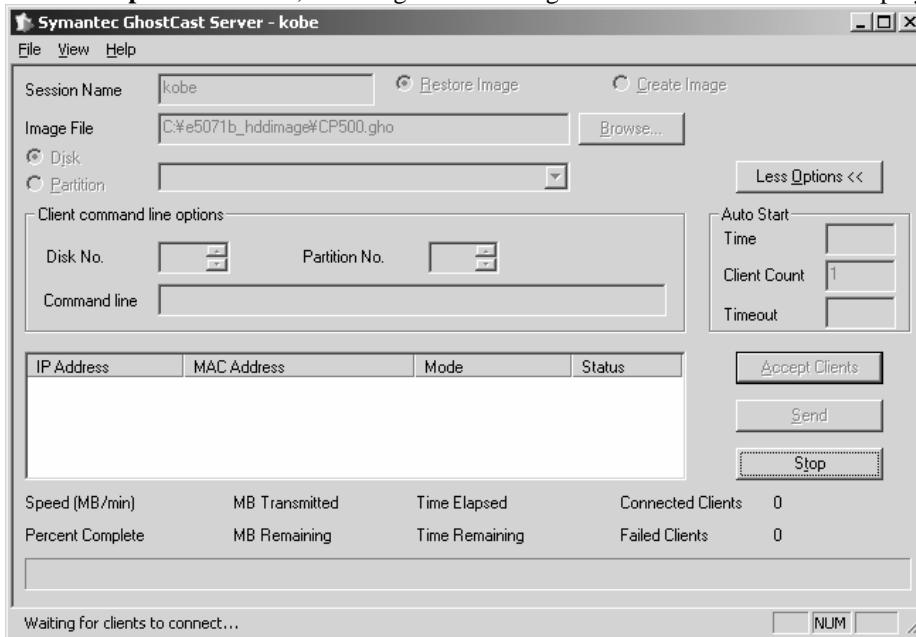
- 5) Select the temporary image file you copied, and press the **Open** button.



6) Enter session name **kobe** and client count **1**. Then select **Restore Image** and **Disk**



7) Click the **Accept Client**. Then, a message of “Waiting for client to connect...” is displayed.

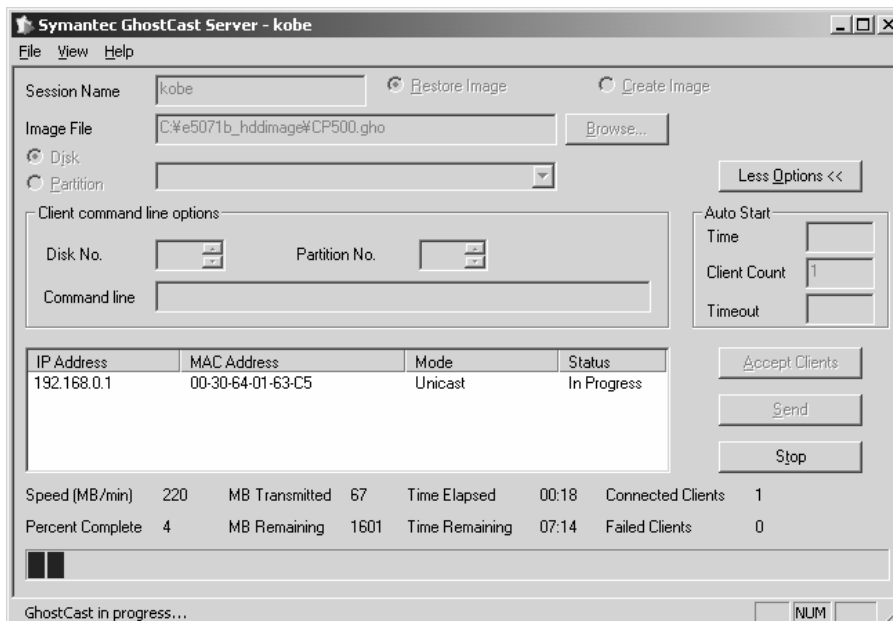


### 5. Copy the image file onto the E5071B's HDD

- 1) Connect the external keyboard and mouse to the connectors on the E5071B rear panel.
- 2) Insert the ghost boot disk (1<sup>st</sup> disk) into the FDD of the E5071B.
- 2) Turn the instrument on.  
Press **F12** key as soon as the message of “**Press TAB to show POST screen, DEL to enter SETUP, F12 to select BOOT DEVICE**” is displayed in the splash screen. Wait a few seconds until the **Boot Menu** screen appears.
- 3) Select **Floppy**, and then press **Enter** key.
- 4) **PC DOS 7.1 Startup Menu** is displayed. Then, select **1** and press **Enter** key.
- 5) Confirm that there are no error messages on the display.
- 6) A message of “**Insert Ghost boot disk 2 (containing Ghost.exe). Press any key to continue..**” is displayed. Then, insert the disk 2 into the FDD, and press **Enter** key.
- 7) **About Symantec Ghost** dialog box is displayed. Then, click the **OK** button.
- 8) Click **Ghost Cast – Unicast**.
- 9) **GhostCast Session Name to Join** dialog box is displayed. Enter the session name **kobe**, select Server IP Address and enter the IP address **192.168.0.2**. Then, click the **OK** button.
- 10) **Select local destination drive by clicking on the driver number** dialog box is displayed. Then, click the **OK** button.
- 11) **Destination Drive Details** dialog box is displayed. Confirm that New Size and Old Size of each Label is as follows. Then, click the **OK** button.

Label	New Size	Old Size
CARPENTER	1411	1411
USER	3012	3012
RECOVERY	3012	3012
SWAP	2149	2149

- 12) **Question: (LB22)** dialog box is displayed. Then, click the **Yes** button.
- 13) **Progress Indicator** dialog box appears.
- 14) In your PC, a message of “**GhostCast in progress..**” is displayed.



- 15) In E5071B display, **Clone Complete** dialog box is displayed. Then, click the **Continue** button and **Quit**.
- 16) **Quit Symantec Ghost** dialog box is displayed. Then, click the **Yes** button.
- 17) **A:\GHOST>** prompt is displayed. Then, turn the E5071B off.
- 18) In your PC, **Transfer Complete** is displayed. Then, click the **OK** button.



- 19) Remove the boot disk from the E5071B's FDD.
- 20) Turn the E5071B on.
- 21) The Windows 2000 Professional Setup wizard appears. Perform the initial registration of the Windows 2000 operating system of the E5071B. Refer to the appendix B of the E5070/71B service guide.
- 22) Confirm that the firmware revision Rev. A.05.00 is displayed.
- 23) The measurement view is displayed, and a message of "Calibration data lost (band information)" is displayed. Then, turn the E5071B off.

#### **6. Perform initial setting for E5071B**

- 1) Disconnect the LAN cable from the E5071B.
- 5) Connect the E5071B to your PC installed the E5070/71B adjustment program with a GPIB cable.
- 6) Turn the E5071B and the PC on.
- 7) Perform "HDD" in Spot Adjustment of the E5070/71B adjustment program.
- 8) Calibrate the touch screen (for option 016).